

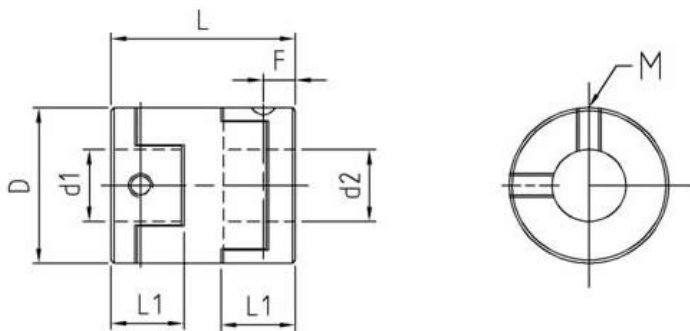
Oldham Coupling



Features:

1. Oldham type flexible coupling
2. Allows high parallel and angular misalignments
3. No requirement for maintenance misalignment.
4. Zero backlash

| Material | Surface finish | Accessories |
|----------|------------------|-------------|
| Al Alloy | Anodic oxidation | Clamp Screw |



Dimensions

| Series | D | d1~d2 | L | L1 | F | Clamp Screw | |
|--------|----|---------|----|----|-----|-------------|--------------------|
| | mm | mm | mm | mm | mm | Thread | Rated Torque (N·m) |
| OHC16 | 16 | 4~6 | 21 | 7 | 3.5 | M3 | 0.7 |
| OHC20 | 20 | 5~8 | 23 | 7 | 3.5 | M4 | 1.5 |
| OHC25 | 25 | 6.35~10 | 28 | 8 | 4 | M5 | 1.5 |
| OHC32 | 32 | 7~14 | 34 | 10 | 5 | M6 | 2.5 |
| OHC40 | 40 | 9.53~16 | 35 | 14 | 7 | M6 | 6.0 |

Technical Properties

| Series | D | Rated Torque | Angular Misalignment | Parallel Misalignment | Static Tensional Stiffness | Max Speed | Moment Inertia | Axial Motion |
|--------|------|--------------|----------------------|-----------------------|----------------------------|-----------|----------------------|--------------|
| | (mm) | (N·m) | | (mm) | | | | |
| OHC16 | 16 | 0.7 | 3.0° | 1.0 | 31 N·m/rad | 9500 | 3.2×10 ⁻⁷ | ±0.3 |
| OHC20 | 20 | 1.2 | 3.0° | 1.5 | 60 N·m/rad | 7600 | 1.0×10 ⁻⁶ | ±0.4 |
| OHC25 | 25 | 2.0 | 3.0° | 2.0 | 140 N·m/rad | 6100 | 3.0×10 ⁻⁶ | ±0.4 |
| OHC32 | 32 | 4.5 | 3.0° | 2.5 | 280 N·m/rad | 4800 | 9.5×10 ⁻⁶ | ±0.5 |
| OHC40 | 40 | 9.0 | 3.0° | 3.0 | 540 N·m/rad | 3800 | 2.3×10 ⁻⁵ | ±0.5 |