

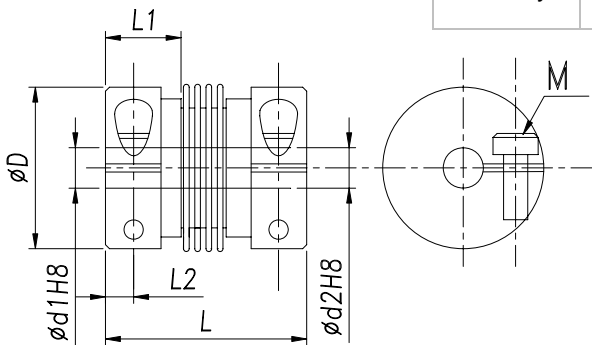
## Bellows Coupling



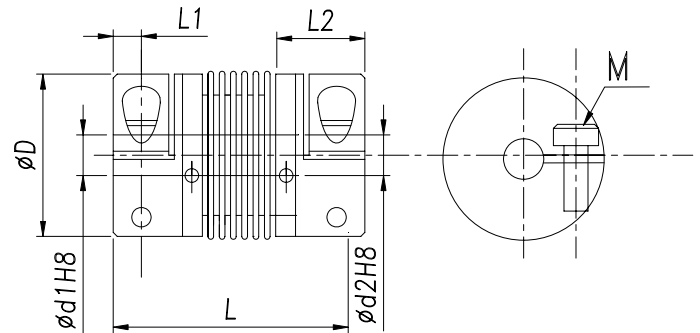
### Features:

1. High tensional stiffness, low inertia and high precision
2. Spring action bellows configuration allows axial, angular and parallel misalignment.
3. Identical clockwise and anticlockwise rotational characteristics misalignment.
4. Zero backlash
5. Clamp type.

| Material |                                    | Surface finish   |        | Accessories |
|----------|------------------------------------|------------------|--------|-------------|
| Body     | Sleeve                             | Body             | Sleeve |             |
| Al Alloy | Stainless Steel or Phosphor Bronze | Anodic oxidation | None   | Clamp Screw |



**BLC20, BLC25**



**BLC32, BLC40, BLC55**

### Dimensions

| Series | D  | d1~d2 | L  | L1   | L2  | Clamp Screw |                    |
|--------|----|-------|----|------|-----|-------------|--------------------|
|        | mm | mm    | mm | mm   | mm  | Thread      | Rated Torque (N·m) |
| BLC20  | 20 | 6~12  | 33 | 11.5 | 4.0 | M3          | 1.5                |
| BLC25  | 25 | 6~12  | 38 | 13.0 | 4.5 | M4          | 1.7                |
| BLC32  | 32 | 8~14  | 45 | 15.0 | 5.5 | M4          | 2.5                |
| BLC40  | 40 | 10~16 | 62 | 21.5 | 6.5 | M5          | 7.0                |
| BLC55  | 55 | 12~19 | 72 | 23.0 | 7.0 | M5          | 12.0               |

### Technical Properties

| Series | D    | Rated Torque (N·m) | Angular Misalignment | Parallel Misalignment (mm) | Static Tensional Stiffness | Max Speed (r/min) | Moment Inertia (Kg·m <sup>2</sup> ) | Axial Motion (mm) |
|--------|------|--------------------|----------------------|----------------------------|----------------------------|-------------------|-------------------------------------|-------------------|
|        | (mm) |                    |                      |                            |                            |                   |                                     |                   |
| BLC20  | 20   | 0.8                | 1.5°                 | 0.10                       | 160 N·m/rad                | 19000             | 8.9×10 <sup>-7</sup>                | +0.3<br>-1.0      |
| BLC25  | 25   | 1.3                | 2.0°                 | 0.15                       | 220 N·m/rad                | 15000             | 2.8×10 <sup>-6</sup>                | +0.5<br>-1.3      |
| BLC32  | 32   | 10                 | 2.0°                 | 0.20                       | 310 N·m/rad                | 12000             | 8.8×10 <sup>-6</sup>                | +0.5<br>-1.3      |
| BLC40  | 40   | 15                 | 2.0°                 | 0.20                       | 520 N·m/rad                | 8000              | 1.5×10 <sup>-5</sup>                | +0.7<br>-1.5      |
| BLC55  | 55   | 20                 | 2.0°                 | 0.20                       | 850 N·m/rad                | 4000              | 2.3×10 <sup>-5</sup>                | +0.7<br>-1.5      |

※ If your required size is different from the above, please tell us.