

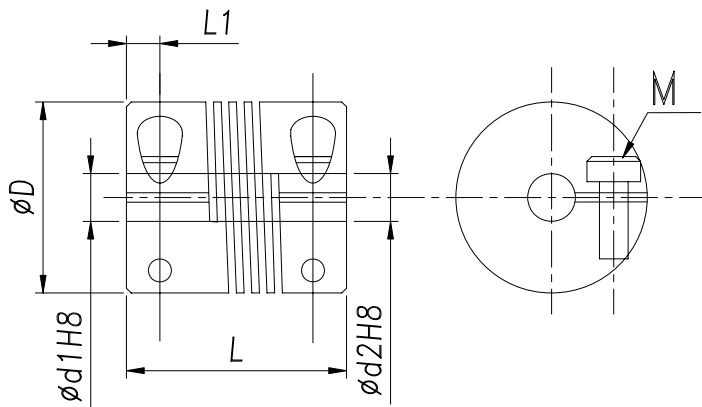
## Helical Slit Beam Coupling



### Features:

1. One-piece metallic spring coupling
2. Compensate for axial, angular and parallel misalignment by spring action.
3. No requirement for maintenance misalignment.
4. Zero backlash

Material	Surface finish	Accessories
Al Alloy	Anodic oxidation	Clamp Screw



### Dimensions

Code	D	d1~d2	L	L1	Clamp Screw	
	mm	mm	mm	mm	Screw	Rated Torque (N·m)
BMCH20	20	4~8	23	3.5	M3	1.5
BMCH25	25	5~10	31	4.0	M3	1.5
BMCH28	28	6~12	38	5.0	M3	2.0
BMCH32	32	8~12	41	6.0	M4	3.0
BMCH38	38	8~15	41	6.0	M5	7.0

### Technical Properties

Code	D	Rated Torque (N·m)	Angular Misalignment	Parallel Misalignment (mm)	Static Tensional Stiffness	Max Speed	Moment Inertia (Kg·m <sup>2</sup> )	Axial Motion (mm)
	(mm)					(r/min)		
BMCH20	20	1.0	2.0°	0.1	170 N·m/rad	7600	2.5×10 <sup>-6</sup>	±0.3
BMCH25	25	2.0			380 N·m/rad	6100	7.1×10 <sup>-6</sup>	±0.4
BMCH28	28	2.5			790 N·m/rad	5000	2.6×10 <sup>-6</sup>	±0.4
BMCH32	32	3.0			500 N·m/rad	4800	2.7×10 <sup>-5</sup>	±0.5
BMCH38	38	4.2			980 N·m/rad	4500	8.6×10 <sup>-5</sup>	±0.5

※ If your required size is different from the above, please tell us.

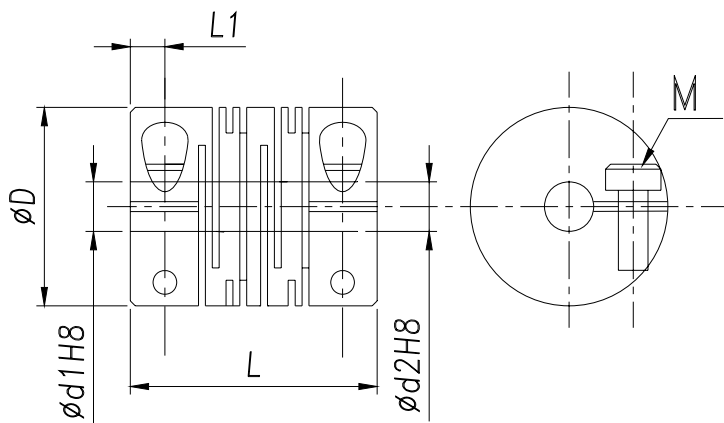
## Parallel Slit Beam Coupling



### Features:

1. One-piece metallic spring coupling
2. Compensate for axial, angular and parallel misalignment by spring action.
3. No requirement for maintenance misalignment.
4. Zero backlash

Material	Surface finish	Accessories
Al Alloy	Anodic oxidation	Clamp Screw



### Dimensions

Code	D	d1~d2	L	L1	Clamp Screw	
	mm	mm	mm	mm	M	Rated Torque (N·m)
BMCP20	20	4~8	23	3.5	M3	1.5
BMCP25	25	5~10	31	4.0	M3	1.5
BMCP28	28	6~12	38	5.0	M3	2.0
BMCP32	32	8~12	41	6.0	M4	3.0
BMCP38	38	8~15	41	6.0	M5	7.0

### Technical Properties

Code	D	Rated Torque (N·m)	Angular Misalignment	Parallel Misalignment (mm)	Static Tensional Stiffness	Max Speed (r/min)	Moment Inertia (Kg·m <sup>2</sup> )	Axial Motion (mm)
	(mm)							
BMCP20	20	1.0	2.0°	0.1	170 N·m/rad	7600	2.5×10 <sup>-6</sup>	±0.3
BMCP25	25	2.0			380 N·m/rad	6100	7.1×10 <sup>-6</sup>	±0.4
BMCP28	28	2.5			790 N·m/rad	5000	2.6×10 <sup>-6</sup>	±0.4
BMCP32	32	3.0			500 N·m/rad	4800	2.7×10 <sup>-5</sup>	±0.5
BMCP38	38	4.2			980 N·m/rad	4500	8.6×10 <sup>-5</sup>	±0.5

※ If your required size is different from the above, please tell us.