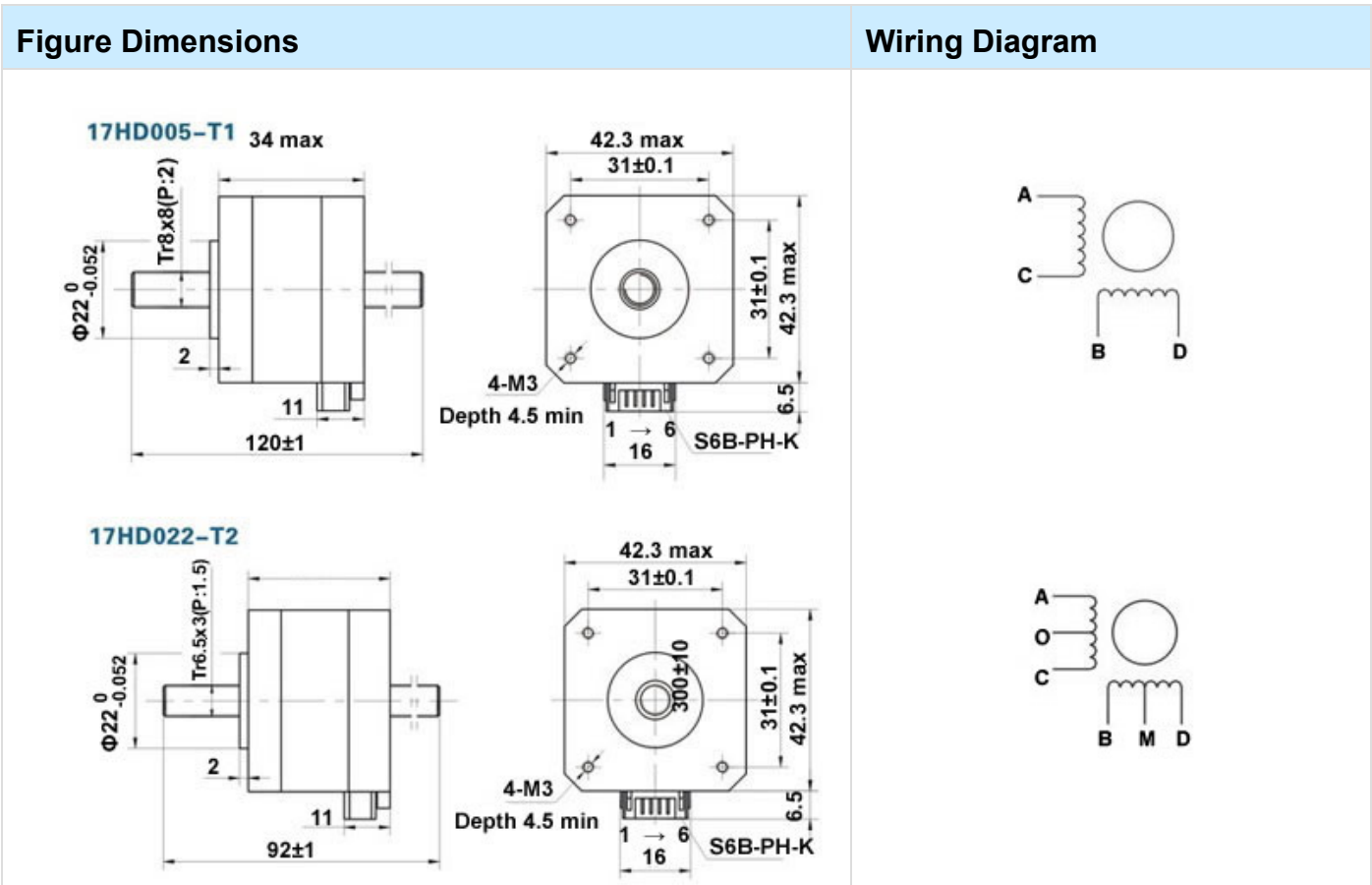
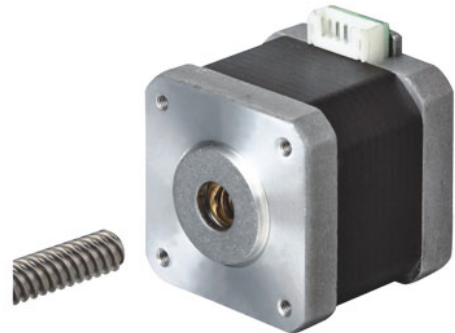


## 17HD NC Series

Positional error:  $\pm 5\%$ ;  
 Working Temperature:  $-10^{\circ}\text{C}$ - $+40^{\circ}\text{C}$ ;  
 Temperature rise: 85K;  
 Insulation resistance: 100Mohm min 500V DC;  
 Insulation class: B.



Modle	Step angle	Phases	Resolution (mm)	Rated current (A)	Resistance per phase ( $\Omega$ )	Inductance per phase (mH)	Detent torque (mN.m)	Rotor inertia ( $\text{g}\cdot\text{cm}^2$ )	Motor mass (kg)
17HD005-T1	$1.8^{\circ}$	2	0.040	0.60	22	28	12	38	0.2
17HD022-T2	$1.8^{\circ}$	4	0.015	0.75	4.2	2.5	12	38	0.2